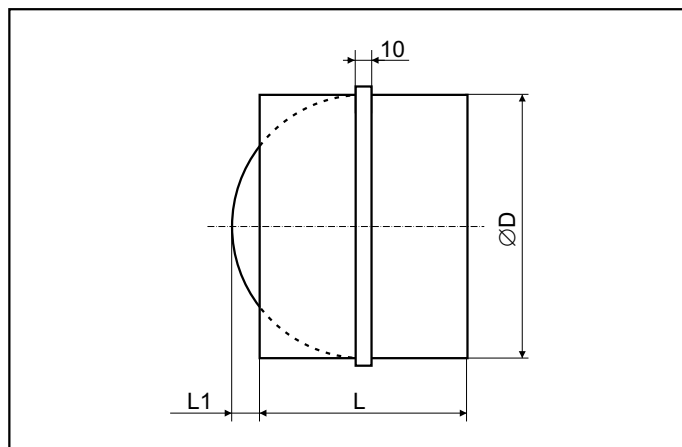


HVAC COMPONENTS - ROUND

BACK DRAUGHT SHUTTER

RSKR-Z



DESCRIPTION

RSKR-Z back draught shutter is used for installation into round ducting system to prevent reverse airflow.

Shutter's casing is made from galvanized metal sheet, shutters sheets from aluminium and shaft and spring from steel.

The inner rubber sealing ensures tightness of the shutter, which at the same time reduces noise. Nominal diameters correspond to those in DIN 24145. The production range and main dimensions are shown in table.



MOUNTING AND INSTALLATION

It is recommended that you install the shutter into horizontal ducting. The shutter is spindle must be vertical. The shutter is installed into ducting by simply sliding it in.



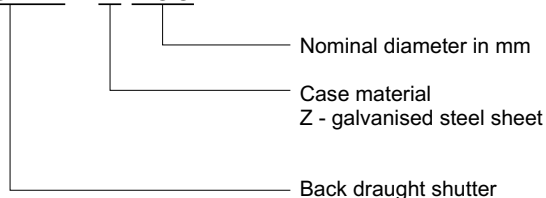
OPERATING CONDITIONS

RSKR-Z back draught shutter is intended for operation in a standard environment with ambient temperature up to 60°C, for transportation of clean air free of coarse dust, grease, chemical vapours and other impurities.



EXAMPLE OF MARKING

RSKR - Z 100

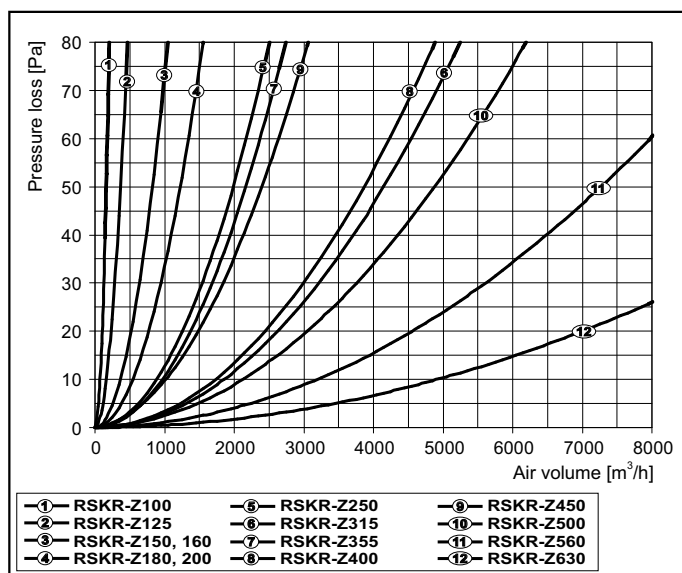


TRANSPORTATION AND STORAGE

The shutters are individually packed in cardboard. According to the packing quantity they are then packed in three-layer cardboard boxes. It is necessary to pay proper care during handling of the shutters. It is necessary to avoid shocks, vibration and impact during transport. Shutters must be stored in dry and clean storerooms.



MAIN PARAMETERS



Type	ØD [mm]	L [mm]	L1 [mm]	Case thickness [mm]	Average weight [kg]
RSKR-Z100	100	88	6	0,55	0,13
RSKR-Z125	125	88	19	0,55	0,17
RSKR-Z150	150	88	31	0,55	0,22
RSKR-Z160	160	88	36	0,55	0,24
RSKR-Z180	180	88	46	0,55	0,26
RSKR-Z200	200	88	56	0,55	0,29
RSKR-Z250	250	128	61	0,8	0,68
RSKR-Z315	315	128	94	0,8	0,81
RSKR-Z355	355	198	65	0,8	1,47
RSKR-Z400	400	198	94	0,8	1,68
RSKR-Z450	450	248	80	0,8	2,43
RSKR-Z500	500	248	107	0,8	2,76
RSKR-Z560	560	248	136	0,8	3,14
RSKR-Z630	630	248	172	0,8	3,61



EXAMPLE OF ORDER

RSKR-Z back draught shutter of galvanized steel sheet into Ø160 mm ducting.

RSKR-Z160

1 pc